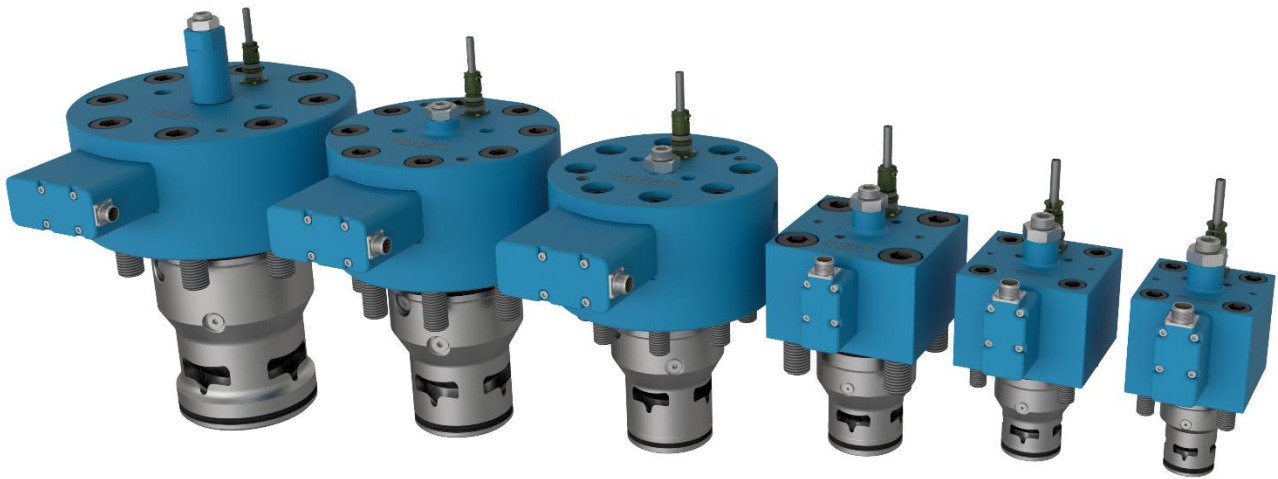


OILGEAR

S V X SERIES



HIGH SPEED | FINE CONTROL | UNMATCHED DURABILITY

SETTING THE STANDARD FOR HYDRAULIC MOTION CONTROL

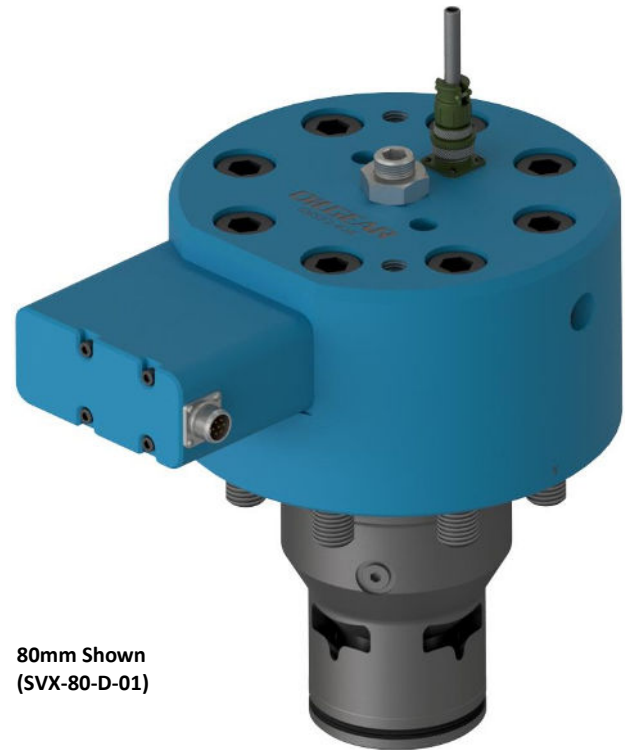
OILGEAR SVX SERIES

TECHNICAL DATA SHEET
2-WAY SERVO-CONTROLLED
PROPORTIONAL THROTTLE VALVE

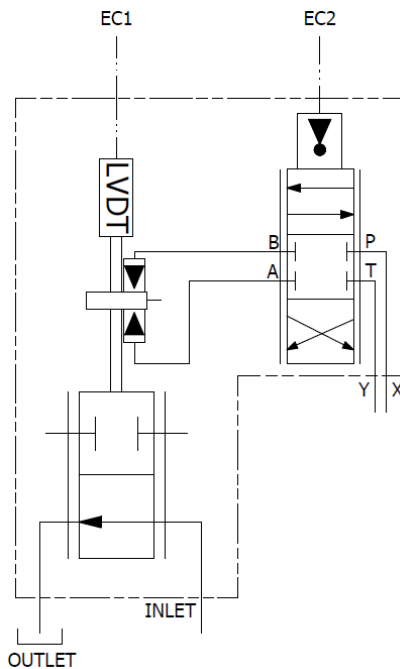
The Olmsted SVX Series of 2-way servo controlled proportional throttling valves are designed specifically for hydraulic applications where very fine flow control and rapid dynamic response are critical to system performance. The SVX series valves are perfectly suited for high-speed hydraulic applications such as die casting shot control, injection molding and more.

KEY FEATURES:

- Standard cavity sizes NG40 through NG125
**Expanded range available on request*
- High-Speed DDV servo pilot valve as standard
- Industry-leading dynamic response for fast and accurate motion control
- Unique flow window design provides superior flow control over a broad range
- Designed for long life in the most demanding high-cycle applications



80mm Shown
(SVX-80-D-01)



DESCRIPTION:

The SVX Series valves are a 2-stage cartridge valve design. The main stage features a unique metering sleeve, flow gate, and control spool. An internal LVDT provides position feedback of the control spool for closed-loop proportional control.

Pilot control for the main stage is provided by an NFPA servo valve. The standard offering includes a high-speed proportional servo-controlled DDV, which provides high pilot flow for excellent dynamic response.

Pressure and tank connections for the pilot valve are provided via the X and Y port locations on the valve cap or may be externally connected with pilot lines.

The information disclosed in this document is proprietary and confidential to Oilgear and/or its licensors and by accessing this document you agree not to distribute or reproduce this document without Oilgear's prior written consent. Oilgear retains all Intellectual Property for all designs and concepts developed by Oilgear which may be disclosed herein. Oilgear and/or its licensors, as appropriate, reserve all patent, copyright and other proprietary rights contained in this document, including all design, manufacturing, reproduction, use and sales rights thereto, except to the extent said rights are expressly granted to others.
© 2024 OILGEAR

The Oilgear Company
1424 International Drive
Traverse City, MI 49686
Phone: 231-929-1660

Document Number

EB#639

Revision

B

Revision Date

10/1/2024

ORDERING INFORMATION / PART NUMBER CONFIGURATION:



SVX Series		Nominal Size
Code	Nominal Size	
040	40 mm	
050	50 mm	
063	63 mm	
080	80 mm	
100	100 mm	
125	125 mm	
*	Ask for additional sizing options	

Slip-in Cartridge		Design Series	Bolting Option
Code	Bolting Option		
(Blank)	Unified (inch)		
M	Metric		

Control Option	
Code	Servo Control Valve Option
(Blank)	± 10 V (Standard)
B	± 20 mA
C	4-20 mA
0	Without Control Valve (NFPA Flange Provided)
*	Ask for additional options

Sample Part Numbers:

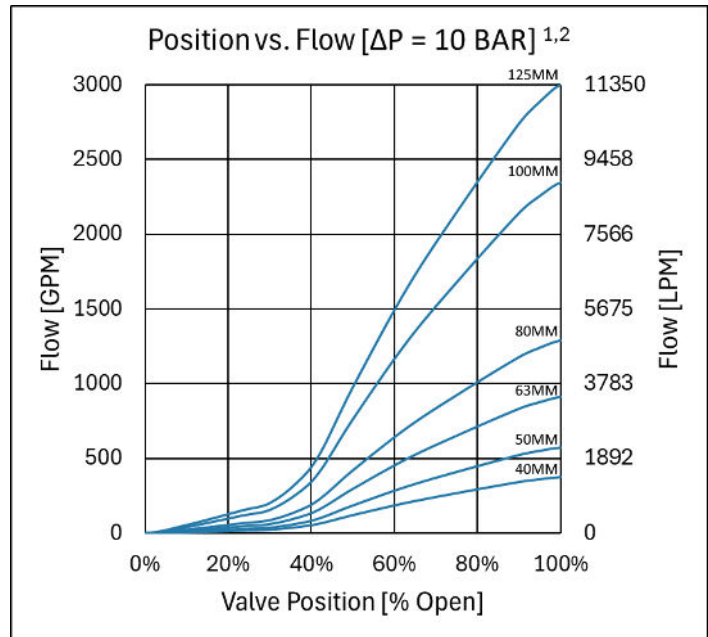
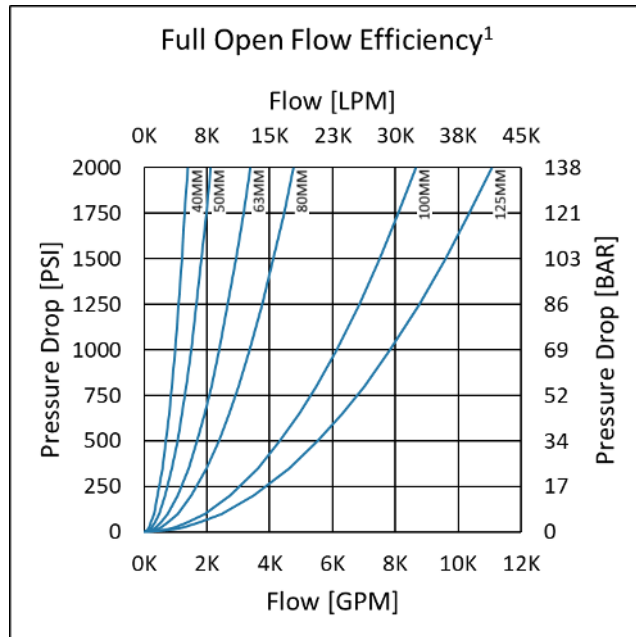
SVX-050-D-01

50mm DIN Cartridge, Unified (inch) Bolting, ± 10 V Control Servo

SVX-125-D-01M-0

125mm DIN Cartridge, Metric Bolting, Without Control Servo

FLOW CHARACTERISTICS:



1. Estimate Flow data provided using water-glycol type fluid (sg=1.06). Flow is shown in the recommended side-to-bottom direction.
2. Position data excludes cushions at end of stroke.

NOTICE – THIS DOCUMENT IS CONFIDENTIAL/PROPRIETARY TO OILGEAR – DO NOT DISTRIBUTE WITHOUT OILGEAR’S WRITTEN CONSENT © 2024 OILGEAR

APPLICATION DATA:

Basic						
Nominal Size	40 MM	50 MM	63 MM	80 MM	100 MM	125 MM
Cavity Type	ISO 7368 / DIN 24342					ISO 7368
Mounting Position	Unlimited					
Approximate Weight	38 lb. [17 kg]	52 lb. [24 kg]	88 lb. [40 kg]	192 lb. [87 kg]	276 lb. [125 kg]	479 lb. [217 kg]
Vibration Resistance (Servo Valve)	30 g, 3 axes BS EN 60068-2 (20-35hz, 16g, 15 min per axis; 35-2000hz, 35g, 15 min per axis)					
Shock Resistance (Servo Valve)	50 g BS EN 60068-2 (20 shocks in single axis)					

Hydraulic						
Recommended Fluid Type	Water-Glycol, Mineral Oil					
Max Working Pressure (Inlet, Outlet)	5000 psi [350 bar]					
Max Pilot Pressure (X/P)	5000 psi [350 bar]					
Max Tank Pressure (Y/T)	3600 psi [250 bar]					
Working Fluid Temperature	-4°F to 140°F [-20°C to 60°C]					
Recommended Viscosity	100 to 400 SUS [20 to 90 cst]					
Required Filtration	NAS 1638 Class 7 [ISO 4406 18/16/13]					
Est. Flow @ ΔP = 145 psi [10 bar]	375 gpm [1420 lpm]	574 gpm [2174 lpm]	914 gpm [3460 lpm]	1289 gpm [4880 lpm]	2344 gpm [8872 lpm]	3000 gpm [11356 lpm]
Est. Cv	32	49	78	110	200	256
Leakage @ 1000 psi [70 bar]	< 12 in ³ /m	< 20 in ³ /m	< 25 in ³ /m	< 40 in ³ /m	< 60 in ³ /m	< 60 in ³ /m
Water Glycol @ 122°F [50°C]	[200 ml/m]	[330 ml/m]	[410 ml/m]	[655 ml/m]	[985 ml/m]	[985 ml/m]
Pilot Valve Size	NG6 [S6 Pro]			NG10 [S10 Pro]		
Rated Pilot Flow @ 1000 psi [70 bar]	16 gpm [60 lpm]			66 gpm [250 lpm]		

Dynamic / Static Response ¹							
Nominal Size		40 MM	50 MM	63 MM	80 MM	100 MM	125 MM
Estimate	Pilot Pressure						
Step Response,	1000 psi [69 bar]	10 ms	15 ms	23 ms	15 ms	25 ms	43 ms
$t_2 = t_1\sqrt{P_1/P_2}$	2000 psi [138 bar]	8 ms	11 ms	17 ms	11 ms	18 ms	31 ms
	3000 psi [207 bar]	6 ms	9 ms	14 ms	9 ms	15 ms	25 ms
Hysteresis		< 0.2 %					

1. Dynamic/Static response is given for the standard provided servo pilot valve. Performance may vary for other pilot valve options.

NOTICE – THIS DOCUMENT IS CONFIDENTIAL/PROPRIETARY TO OILGEAR – DO NOT DISTRIBUTE WITHOUT OILGEAR’S WRITTEN CONSENT © 2024 OILGEAR

NOTICE – THIS DOCUMENT IS CONFIDENTIAL/PROPRIETARY TO OILGEAR – DO NOT DISTRIBUTE WITHOUT OILGEAR’S WRITTEN CONSENT © 2024 OILGEAR

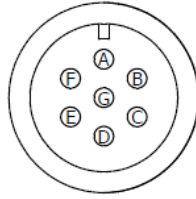
Electrical																								
Nominal Size	40 MM	50 MM	63 MM	80 MM	100 MM	125 MM																		
Pilot Valve¹																								
Type	Direct Drive Servo Valve (DDV)																							
Size	NG06			NG10																				
Supply Voltage	24 V Nominal, 22-30 V Range																							
Max Current Draw	4.5 Amps			15 Amps																				
Differential Input Signal ¹	<table border="0" style="width: 100%;"> <tr> <td style="width: 20%;">Standard</td> <td style="width: 20%;">± 10 V</td> <td colspan="4" style="text-align: center;">-10 V to +10 V</td> </tr> <tr> <td>Code B</td> <td>± 20 mA</td> <td colspan="4" style="text-align: center;">-20 mA to +20 mA</td> </tr> <tr> <td>Code C</td> <td>4-20 mA</td> <td colspan="4" style="text-align: center;">+4 mA to +20 mA</td> </tr> </table>						Standard	± 10 V	-10 V to +10 V				Code B	± 20 mA	-20 mA to +20 mA				Code C	4-20 mA	+4 mA to +20 mA			
Standard	± 10 V	-10 V to +10 V																						
Code B	± 20 mA	-20 mA to +20 mA																						
Code C	4-20 mA	+4 mA to +20 mA																						
Input Impedance ¹	<table border="0" style="width: 100%;"> <tr> <td style="width: 20%;">Standard</td> <td style="width: 20%;">± 10 V</td> <td colspan="4" style="text-align: center;">200 kOhm min.</td> </tr> <tr> <td>Code B</td> <td>± 20 mA</td> <td style="text-align: center;">392 Ohm Typical</td> <td colspan="2"></td> <td style="text-align: center;">499 Ohm Typical</td> </tr> <tr> <td>Code C</td> <td>4-20 mA</td> <td style="text-align: center;">392 Ohm Typical</td> <td colspan="2"></td> <td style="text-align: center;">499 Ohm Typical</td> </tr> </table>						Standard	± 10 V	200 kOhm min.				Code B	± 20 mA	392 Ohm Typical			499 Ohm Typical	Code C	4-20 mA	392 Ohm Typical			499 Ohm Typical
Standard	± 10 V	200 kOhm min.																						
Code B	± 20 mA	392 Ohm Typical			499 Ohm Typical																			
Code C	4-20 mA	392 Ohm Typical			499 Ohm Typical																			
Output Signal ¹	<table border="0" style="width: 100%;"> <tr> <td style="width: 20%;">Standard</td> <td style="width: 20%;">± 10 V</td> <td colspan="4" style="text-align: center;">-10 V to +10 V</td> </tr> <tr> <td>Code B</td> <td>± 20 mA</td> <td colspan="4" style="text-align: center;">-20 mA to +20 mA</td> </tr> <tr> <td>Code C</td> <td>4-20 mA</td> <td colspan="4" style="text-align: center;">+4 mA to +20 mA</td> </tr> </table>						Standard	± 10 V	-10 V to +10 V				Code B	± 20 mA	-20 mA to +20 mA				Code C	4-20 mA	+4 mA to +20 mA			
Standard	± 10 V	-10 V to +10 V																						
Code B	± 20 mA	-20 mA to +20 mA																						
Code C	4-20 mA	+4 mA to +20 mA																						
Output Impedance ¹	<table border="0" style="width: 100%;"> <tr> <td style="width: 20%;">Standard</td> <td style="width: 20%;">± 10 V</td> <td style="text-align: center;">150 Ohm Typical</td> <td colspan="2"></td> <td style="text-align: center;">47 Ohm Typical</td> </tr> <tr> <td>Code B</td> <td>± 20 mA</td> <td colspan="2" style="text-align: center;">650 Ohm Max</td> <td colspan="2"></td> </tr> <tr> <td>Code C</td> <td>4-20 mA</td> <td colspan="2" style="text-align: center;">650 Ohm Max</td> <td colspan="2"></td> </tr> </table>						Standard	± 10 V	150 Ohm Typical			47 Ohm Typical	Code B	± 20 mA	650 Ohm Max				Code C	4-20 mA	650 Ohm Max			
Standard	± 10 V	150 Ohm Typical			47 Ohm Typical																			
Code B	± 20 mA	650 Ohm Max																						
Code C	4-20 mA	650 Ohm Max																						
Power Off Position	Center																							
Electrical Connector	6 pin + PE Circular (EN 175201-804/MIL 5015 Shell Size 14)																							
LVDT																								
Input Voltage	3 V RMS																							
Input Frequency (Nominal)	2.5 kHz																							
Input Frequency Range	400 Hz to 3 kHz																							
Stroke Range	± 1 in [25.4 mm]				± 2 in [50.8 mm]																			
Output at Stroke Ends	280 mV/V				320 mV/V																			
Input Impedance (Primary)	175 Ohm				243 Ohm																			
Output Impedance (Secondary)	230 Ohm				103 Ohm																			
Electrical Connector	6 pin Circular (EN 175201-804/MIL 5015 Shell Size 14)																							

2. Pilot valve electronics ratings vary based on selected command input. See configuration guide on page 2 for details on signal codes.

NOTICE – THIS DOCUMENT IS CONFIDENTIAL/PROPRIETARY TO OILGEAR – DO NOT DISTRIBUTE WITHOUT OILGEAR’S WRITTEN CONSENT © 2024 OILGEAR

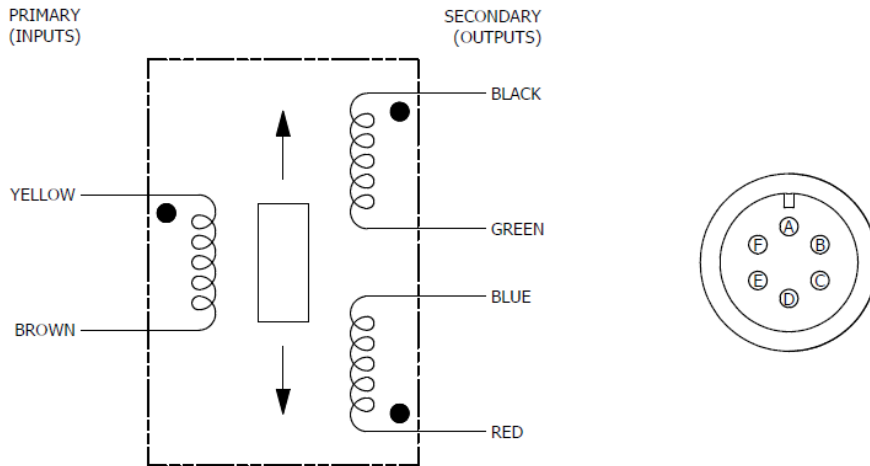
Connectors

Pilot Valve



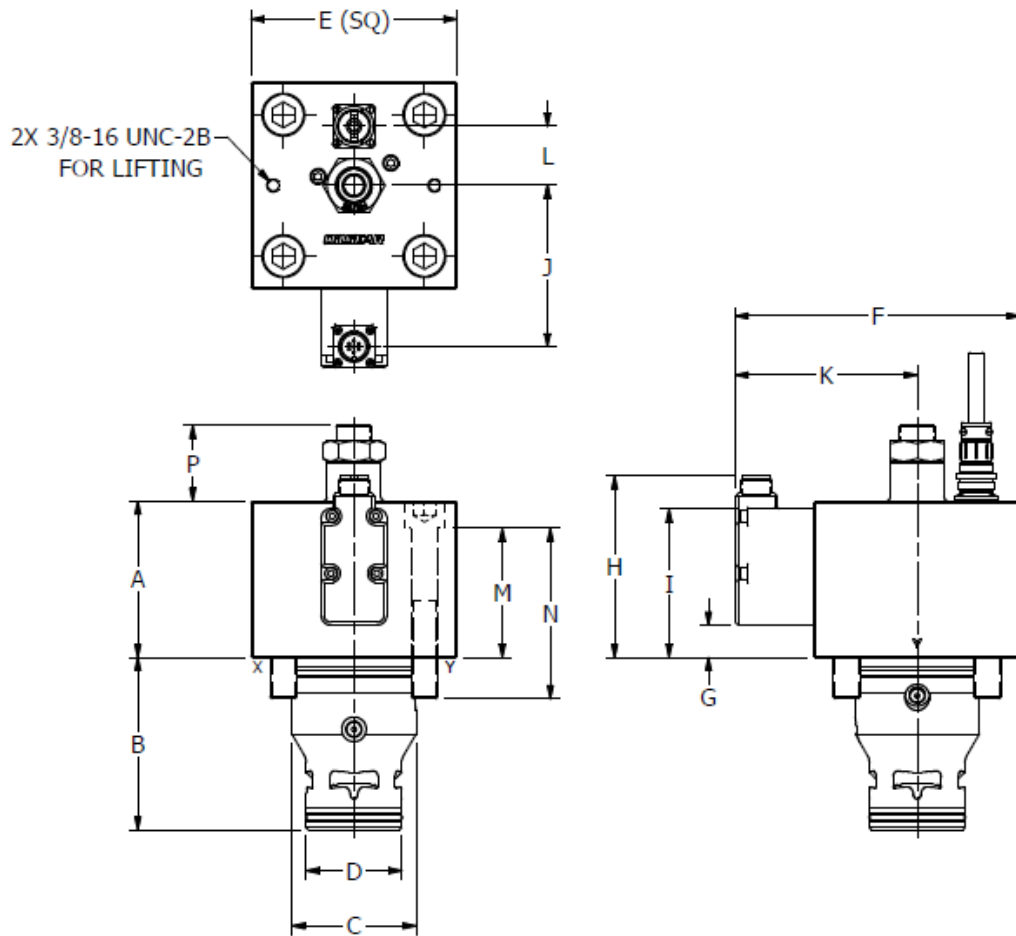
Pin	Function	Description
A	Supply +	+24 V
B	Supply 0V	0 V
C	Output -	Output 0 V Ref
D	Input +	Diff Input signal +
E	Input -	Diff Input Signal -
F	Output +	Output Signal
G	Ground	-

LVDT



Pin	Function	Description
A	Brown	V in -
B	Yellow	V in +
C	Red	V out +
D	Black	V out -
E	Blue/Green	V out Com
F	Not Used	-

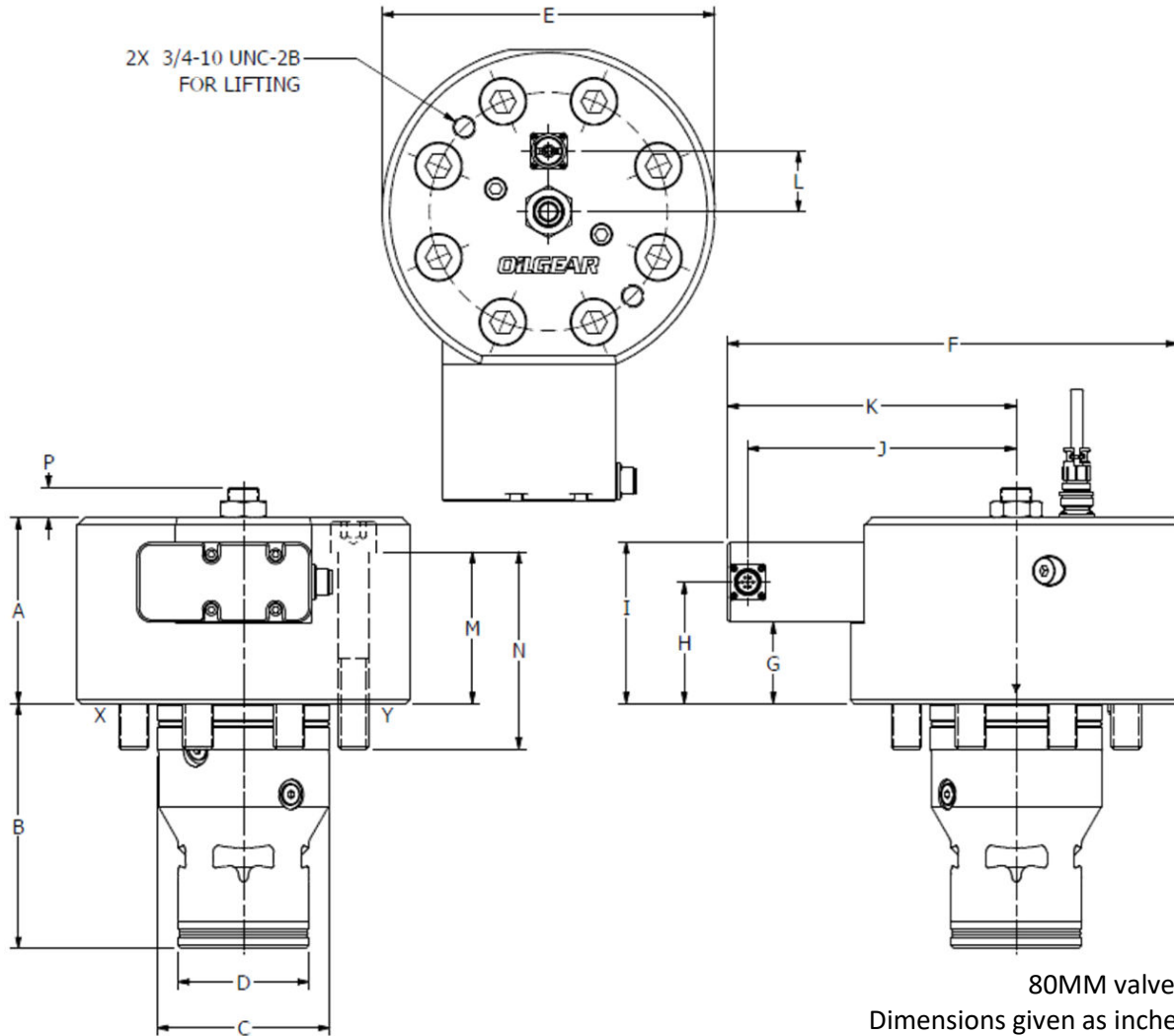
EXTERNAL DIMENSIONS (40 – 63 MM):



50MM valve shown
Dimensions given as inches [mm]

Dimension	Size:	40MM	50MM	63MM
A		4.35 [110]	4.35 [110]	4.62 [117]
B		4.13 [105]	4.80 [122]	6.10 [155]
C		2.95 [75]	3.54 [90]	4.72 [120]
D		2.16 [55]	2.68 [68]	3.54 [90]
E		4.92 [125]	5.75 [146]	7.09 [180]
F		7.13 [181]	7.96 [202]	9.30 [236]
G		.90 [23]	.90 [23]	.90 [23]
H		5.05 [128]	5.05 [128]	5.05 [128]
I		4.15 [105]	4.15 [105]	4.15 [105]
J		4.07 [103]	4.49 [114]	5.16 [131]
K		4.67 [118]	5.08 [129]	5.75 [146]
L		1.65 [42]	1.65 [42]	2.25 [57]
M		3.60 [91]	3.60 [91]	3.37 [86]
N		4.75 [120]	4.75 [120]	5.25 [135]
P		2.10 [53]	2.12 [54]	2.02 [51]

EXTERNAL DIMENSIONS (80 – 125 MM):

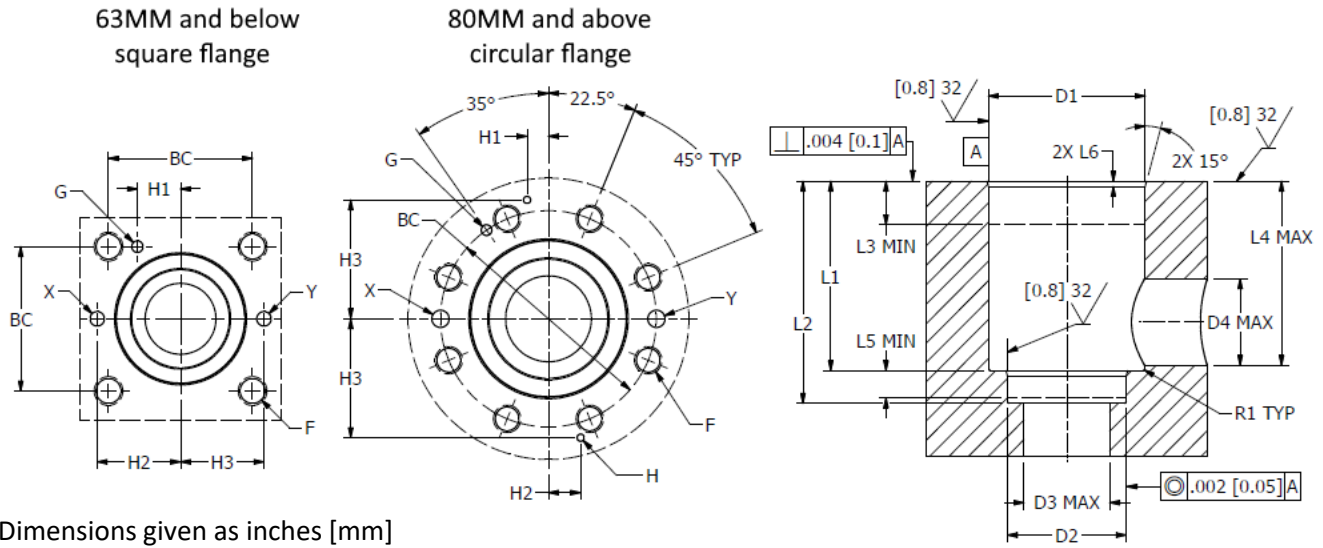


80MM valve shown
Dimensions given as inches [mm]

Dimension	Size:	80MM	100MM	125MM
A		6.13 [156]	6.46 [164]	6.38 [162]
B		8.07 [205]	9.65 [245]	11.81 [300]
C		5.71 [145]	7.09 [180]	8.86 [225]
D		4.33 [110]	5.31 [135]	7.87 [200]
E		11.00 [280]	11.81 [300]	15.35 [390]
F		14.89 [389]	15.66 [398]	19.12 [486]
G		2.68 [68]	2.68 [68]	2.68 [68]
H		4.00 [102]	4.00 [102]	4.00 [102]
I		5.32 [135]	5.32 [135]	5.32 [135]
J		8.89 [226]	9.32 [237]	11.20 [285]
K		9.56 [243]	9.99 [254]	11.87 [302]
L		2.00 [51]	2.95 [75]	3.50 [89]
M		5.00 [127]	5.21 [132]	4.95 [126]
N		6.50 [165]	7.25 [185]	7.00 [180]
P		1.00 [25]	1.42 [36]	4.78 [121]

NOTICE – THIS DOCUMENT IS CONFIDENTIAL/PROPRIETARY TO OILGEAR – DO NOT DISTRIBUTE WITHOUT OILGEAR'S WRITTEN CONSENT © 2024 OILGEAR

CAVITY DIMENSIONS:



Dimensions given as inches [mm]

	ØBC	ØD1 H7	ØD2 H7	ØD3	ØD4	F	ØG H13	ØH H13	H1	H2
40MM	3.346 [85]	2.9528 [75]	2.1654 [55]	1.575 [40]	1.575 [40]	3/8"-10 UNC [M20]	.236 [6]	-	.906 [23]	1.969 [50]
50MM	3.937 [100]	3.5433 [90]	2.6772 [68]	1.969 [50]	1.969 [50]	3/8"-10 UNC [M20]	.315 [8]	-	1.181 [30]	2.283 [58]
63MM	4.921 [125]	4.7244 [120]	3.5433 [90]	2.480 [63]	2.480 [63]	1 1/4"-7 UNC [M30]	.315 [8]	-	1.496 [38]	2.953 [75]
80MM	7.874 ±.012 [200 ±.3]	5.7087 [145]	4.3307 [110]	3.150 [80]	3.150 [80]	1"-8 UNC [M24]	.394 [10]	-	-	-
100MM	9.645 ±.012 [245 ±.3]	7.0866 [180]	5.3150 [135]	3.937 [100]	3.937 [100]	1 1/4"-7 UNC [M30]	.394 [10]	-	-	-
125MM	11.811 ±.012 [300 ±.3]	8.8583 [225]	7.8740 [200]	5.905 [150]	4.921 [125]	- [M36]	-	.394 [10]	1.181 ±.008 [30 ±.2]	1.772 ±.008 [45 ±.2]
	H3	L1	L2	L3	L4	L5	L6	R1 MAX	ØX MAX	ØY MAX
40MM	1.969 [50]	3.425 ±.012 [87 ±.3]	4.134 +.004 [105 +.1]	1.181 [30]	3.327 [84,5]	.591 [15]	.118 [3]	.16 [4]	.394 [10]	.394 [10]
50MM	2.283 [58]	3.937 ±.012 [100 ±.3]	4.803 +.004 [122 +.1]	1.378 [35]	3.839 [97,5]	.669 [17]	.157 [4]	.16 [4]	.394 [10]	.394 [10]
63MM	2.953 [75]	5.118 ±.012 [130 ±.3]	6.102 +.004 [155 +.1]	1.575 [40]	5.000 [127]	.787 [20]	.157 [4]	.16 [4]	.472 [12]	.472 [12]
80MM	-	6.890 ±.016 [175 ±.4]	8.071 +.004 [205 +.1]	1.575 [40]	6.71 [170,5]	.984 [25]	.197 [5]	.16 [4]	.630 [16]	.630 [16]
100MM	-	8.268 ±.016 [210 ±.4]	9.645 +.004 [245 +.1]	1.969 [50]	8.09 [205,5]	1.142 [29]	.197 [5]	.16 [4]	.787 [20]	.787 [20]
125MM	6.496 ±.008 [165 ±.2]	10.118 ±.02 [257 ±.5]	11.811 +.006 [300 ±.15]	1.969 [50]	10.04 [255]	1.220 [31]	.216 [5,5]	.16 [4]	1.260 [32]	1.260 [32]

CONTACT INFORMATION:

The Oilgear Company
Global Headquarters

- ☎ 231-929-1660
- ✉ ussales@oilgear.com ✉ customerservice@oilgear.com
- 📍 1424 International Drive, Traverse City, MI 49686
- 🌐 www.oilgear.com



NOTICE – THIS DOCUMENT IS CONFIDENTIAL/PROPRIETARY TO OILGEAR – DO NOT DISTRIBUTE WITHOUT OILGEAR'S WRITTEN CONSENT © 2024 OILGEAR