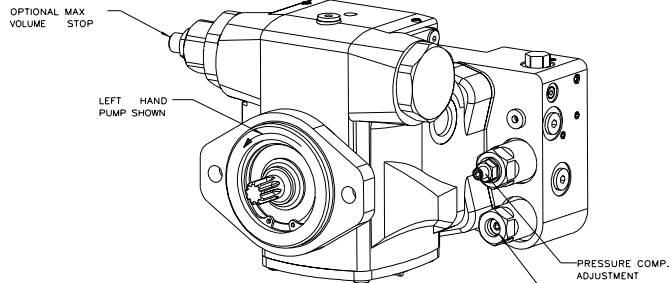
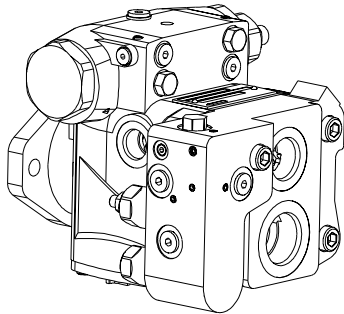
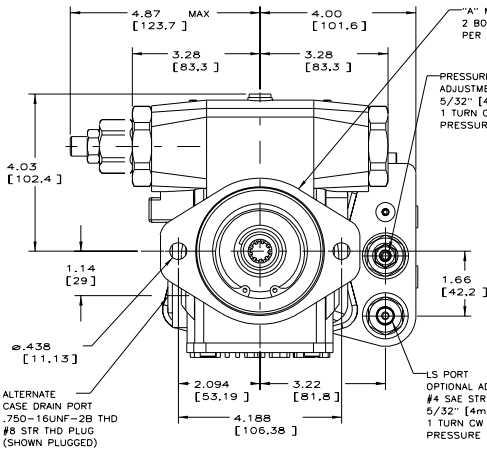
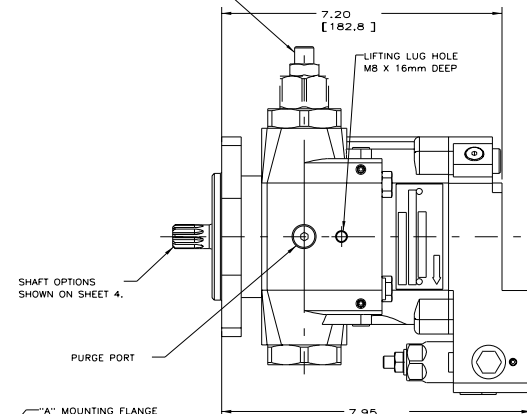

Installation Drawing
Rear Ported


OPTIONAL MAX VOLUME STOP
1/4" [6mm] INTERNAL HEX
1 TURN CW DECREASES FLOW 14%

OPTIONAL ADJUSTABLE
LOAD SENSE

GENERAL NOTES:

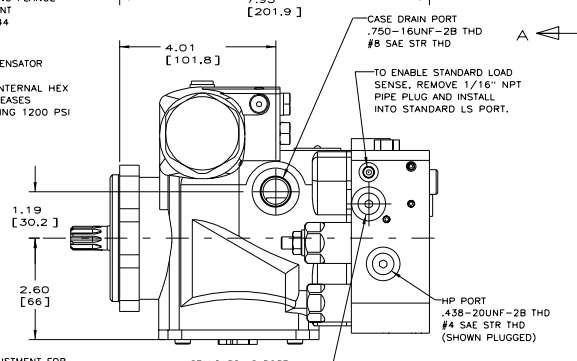
- 1) PUMPS ARE DESIGNED FOR ONE-WAY SERVICE.
- 2) THESE UNITS ARE DESIGNED TO RUN WITH CASE FULL OF FLUID AT ALL TIMES. FILL CASE BEFORE STARTING AND CONNECT DRAIN LINES ACCORDINGLY.
- 3) NUMERICAL DIMENSIONS GIVEN IN INCHES/[mm].
- 4) TOTAL WEIGHT = 37.5 LBS [17,0 KG]
- 5) LEFT HAND SHOWN. SEE EXPLOSION DWG. 519272-104 FOR RIGHT HAND VERSION.



"A" MOUNTING FLANGE
2 BOLT MOUNT
PER SAE J744

PRESSURE COMPENSATOR
ADJUSTMENT
5/32" [4mm] INTERNAL HEX
1 TURN CW INCREASES
PRESSURE SETTING 1200 PSI

LS PORT & ADJUSTMENT FOR
OPTIONAL ADJUSTABLE LOAD SENSE
#4 SAE STR THD
5/32" [4mm] INTERNAL HEX
1 TURN CW INCREASES DIFFERENTIAL
PRESSURE 170 PSI



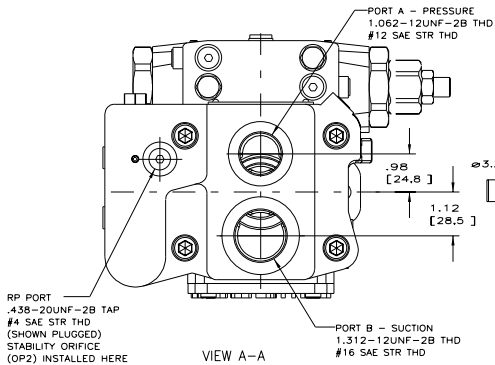
CASE DRAIN PORT
.750-16UNF-2B THD
#8 SAE STR THD

TO ENABLE STANDARD LOAD
SENSE, REMOVE 1/16" NPT
PIPE PLUG AND INSTALL
INTO STANDARD LS PORT.

HP PORT
.438-20UNF-2B THD
#4 SAE STR THD
(SHOWN PLUGGED)

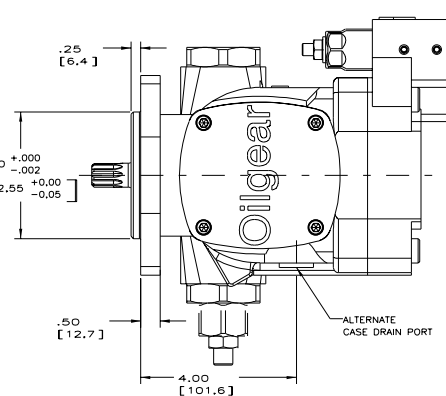
STANDARD LS PORT
.438-20UNF-2B THD
#4 SAE STR THD
(SHOWN PLUGGED)
INSTALL 1/16" NPT
PIPE PLUG (OPS) FOR
STANDARD LOAD SENSING

519343-104 sh. 1

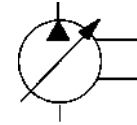


RP PORT
.438-20UNF-2B TAP
#4 SAE STR THD
(SHOWN PLUGGED)
STABILITY ORIFICE
(OP2) INSTALLED HERE

NOTE: DIMENSIONS SHOWN IN [] ARE IN MILLIMETERS

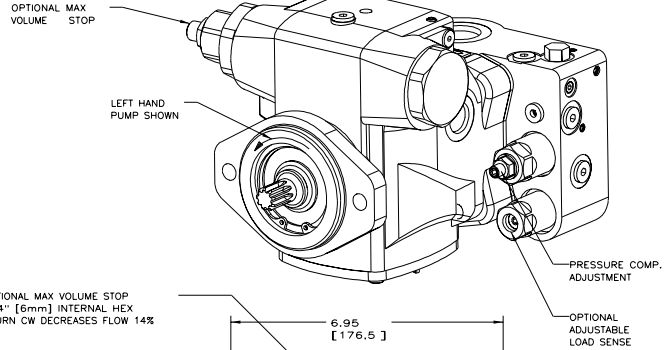
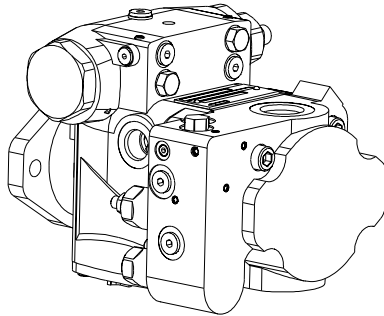


ALTERNATE
CASE DRAIN PORT



Installation Drawing

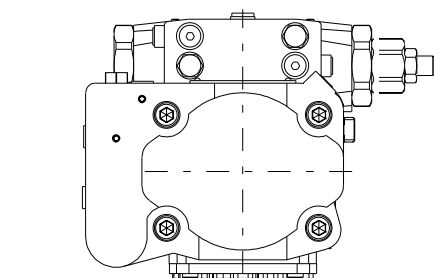
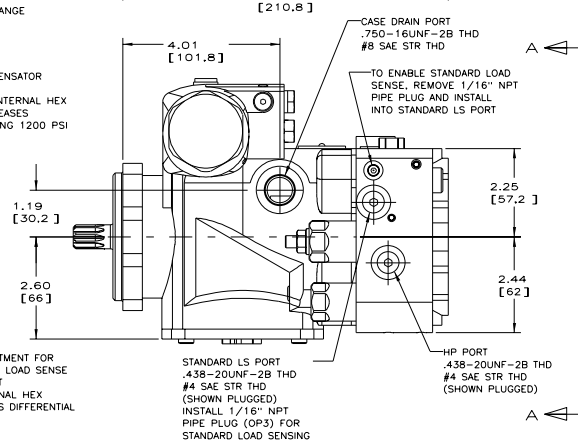
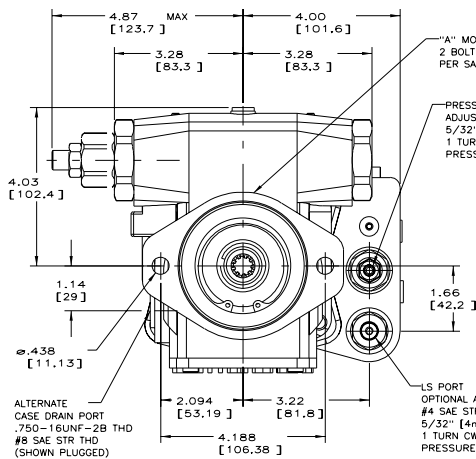
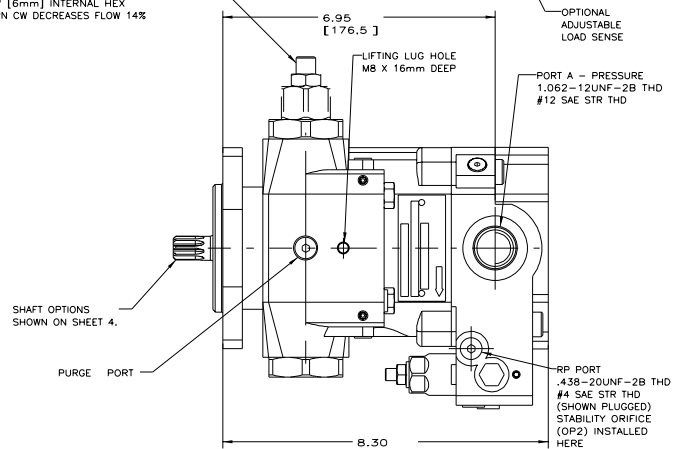
Side Ported



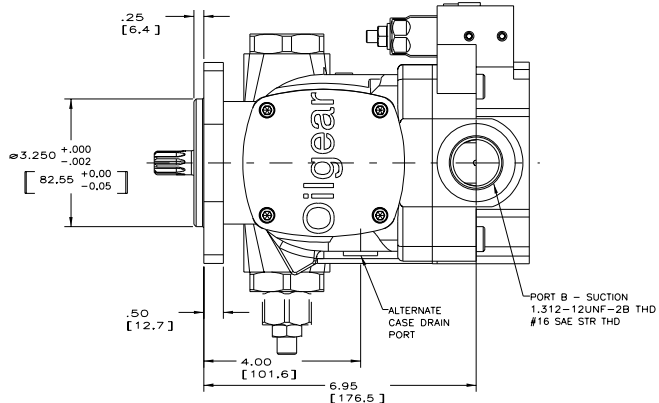
OPTIONAL MAX VOLUME STOP
 1/4" [6mm] INTERNAL HEX
 1 TURN CW DECREASES FLOW 14%

GENERAL NOTES:

- 1) PUMPS ARE DESIGNED FOR ONE-WAY SERVICE.
- 2) THESE UNITS ARE DESIGNED TO RUN WITH CASE FULL OF FLUID AT ALL TIMES. FILL CASE BEFORE STARTING AND CONNECT DRAIN LINES ACCORDINGLY.
- 3) NUMERICAL DIMENSIONS GIVEN IN INCHES/[mm].
- 4) TOTAL WEIGHT = 41.5 LBS (18.9 KG)
- 5) LEFT HAND SHOWN. SEE EXPLOSION DWG. 519272-104 FOR RIGHT HAND VERSION.

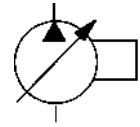


VIEW A-A



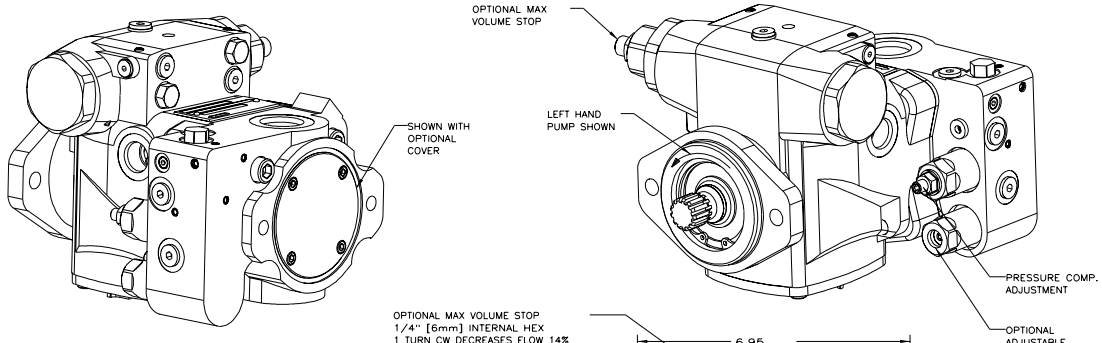
NOTE: DIMENSIONS SHOWN IN [] ARE IN MILLIMETERS

519343-104 sh. 2



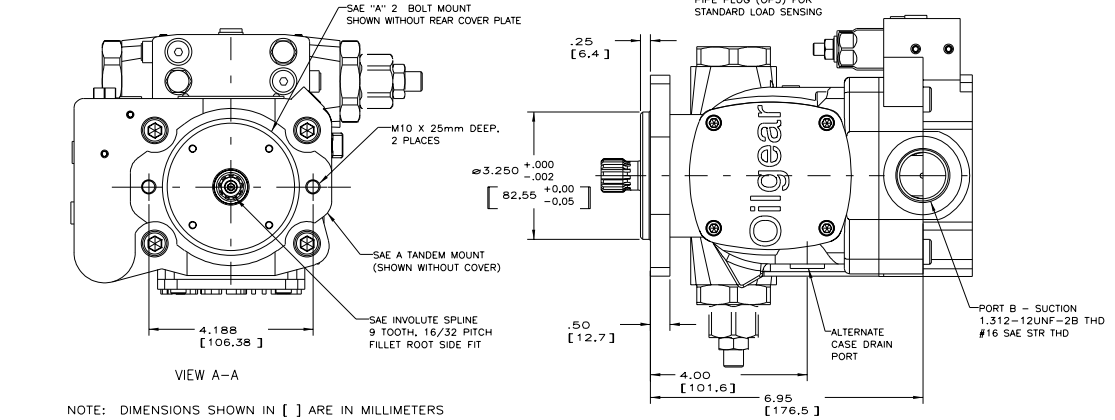
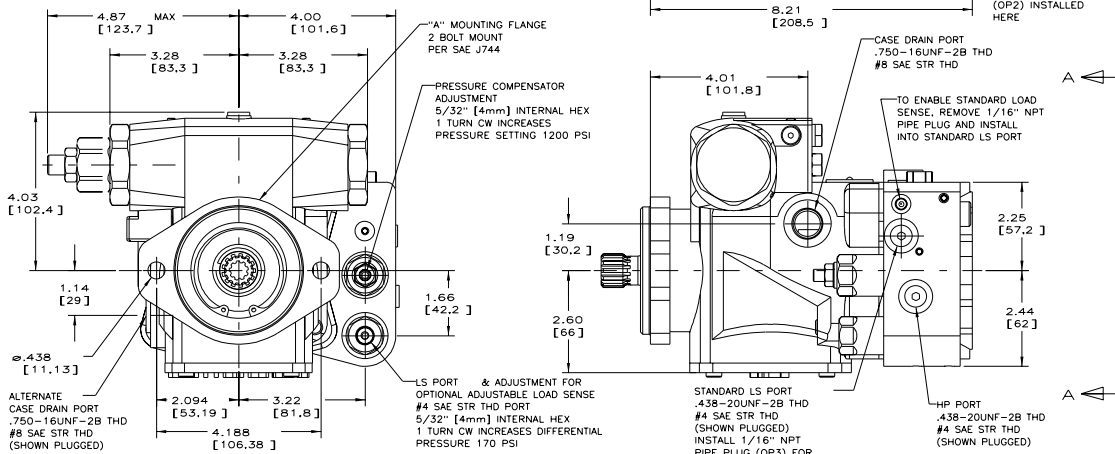
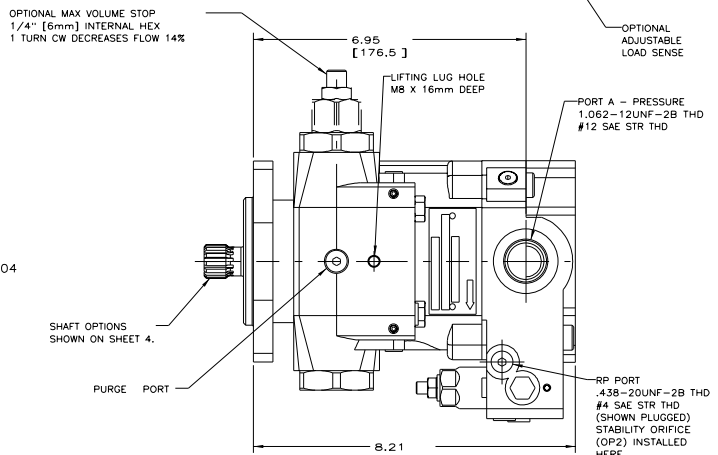
Installation Drawing

Side Ported With Thru-Shaft



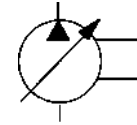
GENERAL NOTES:

- 1) PUMPS ARE DESIGNED FOR ONE-WAY SERVICE.
- 2) THESE UNITS ARE DESIGNED TO RUN WITH CASE FULL OF FLUID AT ALL TIMES. FILL CASE BEFORE STARTING AND CONNECT DRAIN LINES ACCORDINGLY.
- 3) NUMERICAL DIMENSIONS GIVEN IN INCHES/[mm].
- 4) TOTAL WEIGHT = 40.3 LBS (18.3 KG)
- 5) LEFT HAND SHOWN. SEE EXPLOSION DWG. 519272-104 FOR RIGHT HAND VERSION.



NOTE: DIMENSIONS SHOWN IN [] ARE IN MILLIMETERS

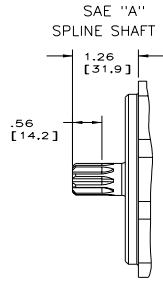
519343-104 sh. 3



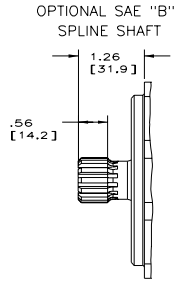
Installation Drawing

Shaft & Control Options

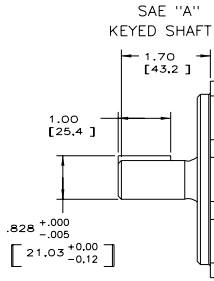
SHAFT OPTIONS



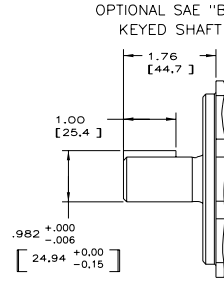
VIEW SHOWING
 SPLINE SHAFT
 SAE INVOLUTE SPLINE
 9 TEETH, 16/32 PITCH
 .611 [15.52] MAJOR DIA.



VIEW SHOWING
 SPLINE SHAFT
 SAE INVOLUTE SPLINE
 13 TEETH, 16/32 PITCH
 .859 [21.82] MAJOR DIA.

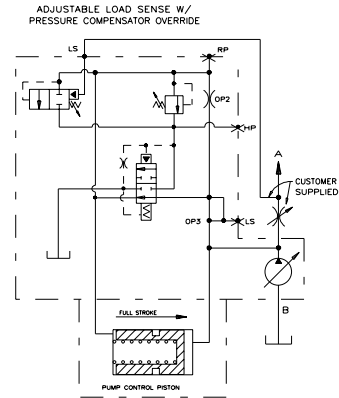
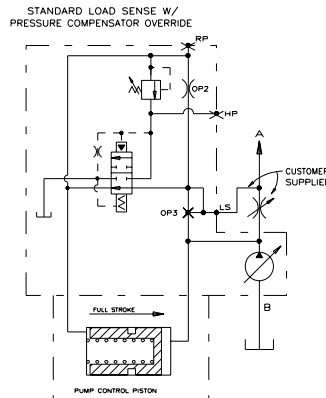
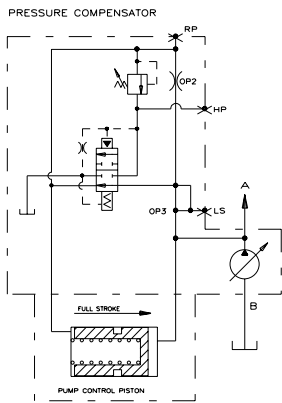


VIEW SHOWING
 KEYED SHAFT
 $\phi .750 - .001$ [19.05 - .025]
 W/ .187 [4.78] SQ. KEY

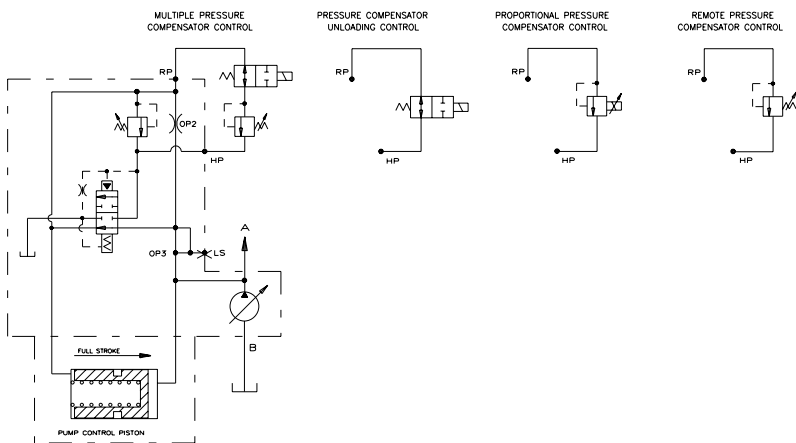


VIEW SHOWING
 KEYED SHAFT
 $\phi .875 - .001$ [22.22 - .025]
 W/ .250 [6.35] SQ. KEY

PUMP CONTROL OPTIONS



REMOTE PRESSURE CONTROL OPTIONS



NOTE: DIMENSIONS SHOWN IN [] ARE IN MILLIMETERS

519343-104 sh. 4