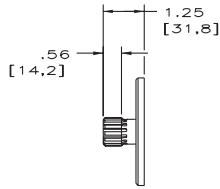
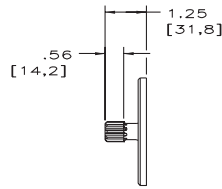


OPTIONAL SAE "B"
SPLINE SHAFT
CODE "C"



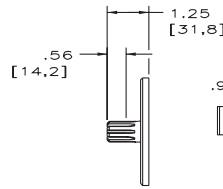
VIEW SHOWING OPTIONAL
SPLINE SHAFT
SAE INVOLUTE SPLINE
13 TEETH, 16/32 PITCH
.859 [21.82] MAJOR DIA.

OPTIONAL SAE "A"
SPLINE SHAFT
CODE "S"



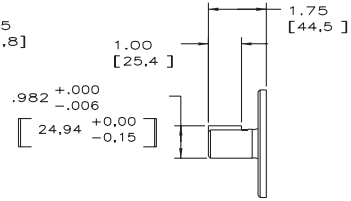
VIEW SHOWING OPTIONAL
SPLINE SHAFT
SAE INVOLUTE SPLINE
9 TEETH, 16/32 PITCH
.610 [15.49] MAJOR DIA.

OPTIONAL SAE "A"
SPLINE SHAFT
CODE "D"

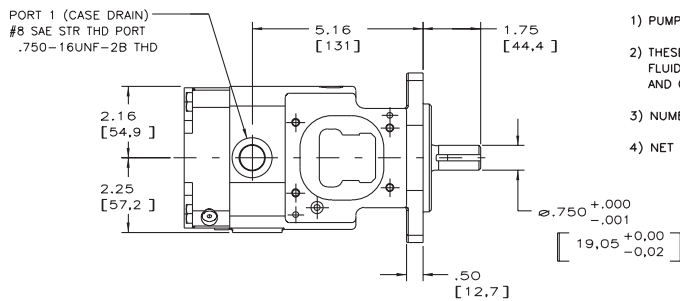
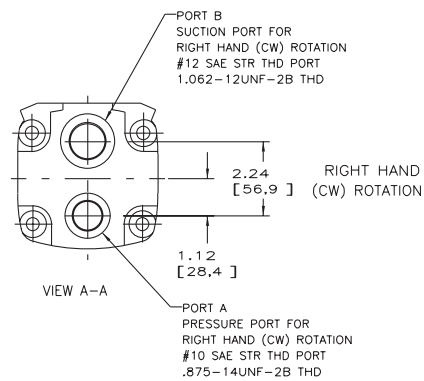
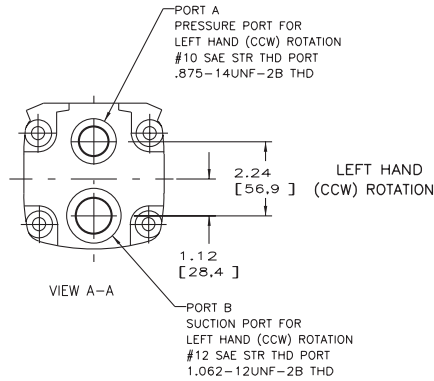


VIEW SHOWING OPTIONAL
SPLINE SHAFT
SAE INVOLUTE SPLINE
9 TEETH, 16/32 PITCH
.625 [15.88] MAJOR DIA.
(INDUSTRIAL VERSION)

OPTIONAL SAE "B"
KEYED SHAFT
CODE "B"



VIEW SHOWING OPTIONAL
KEYED SHAFT
Ø.874-.001 [22.20-.025]
W/ .250 [6.35] SQ. KEY



NOTES:

- 1) PUMPS ARE DESIGNED FOR ONE-WAY SERVICE
- 2) THESE UNITS ARE DESIGNED TO RUN CASE FULL OF FLUID AT ALL TIMES, FILL CASE BEFORE STARTING AND CONNECT DRAIN LINES ACCORDINGLY.
- 3) NUMERICAL DIMENSIONS GIVEN IN INCHES/[MM].
- 4) NET WEIGHT- 24 LBS. [10,9 KG].

