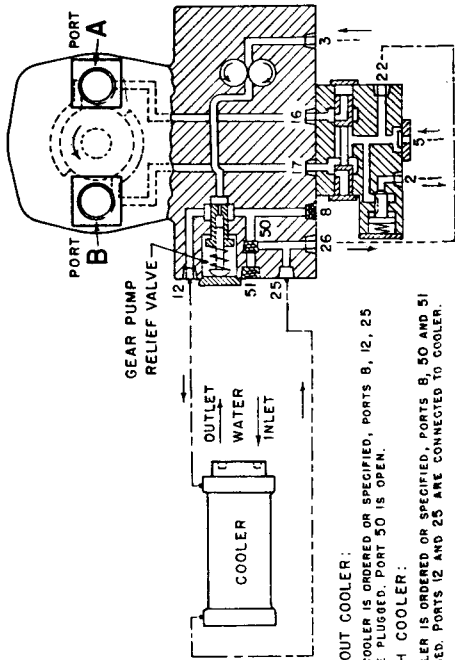




# COOLER OIL CIRCUITS TWO-WAY TYPE "D" PUMPS

57706 A

## SIZES 12 TO 150 PUMPS WITH DIFFERENTIAL CIRCUITS



### PUMP WITHOUT COOLER:

WHEN NO COOLER IS ORDERED OR SPECIFIED, PORTS B, 12, 25 AND 51 ARE PLUGGED. PORT 50 IS OPEN.

### PUMP WITH COOLER:

WHEN COOLER IS ORDERED OR SPECIFIED, PORTS B, 50 AND 51 ARE PLUGGED. PORTS 12 AND 25 ARE CONNECTED TO COOLER.

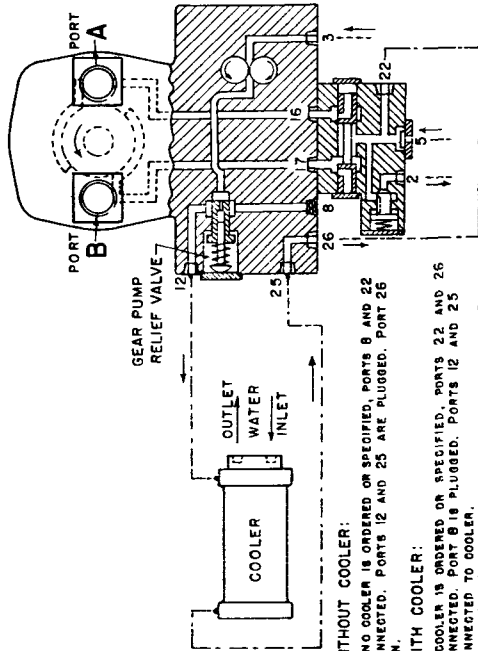
### CAUTION:

DO NOT OPERATE PUMP WITHOUT COOLER UNLESS PORT 50 IS OPEN AND PORTS B, 12, 25 AND 51 ARE PLUGGED.

### \* COOLER INSTALLATION IN FIELD:

BE SURE PORTS B, 50 AND 51 ARE PLUGGED. CONNECT PORTS 12 AND 25 TO COOLER. NOTE: PUMPS WITHOUT PORTS 50 AND 51 TO BE PIPED AS PER DIFFERENTIAL CIRCUIT FOR SIZES 4 AND 8 PUMPS.

## SIZES 4 AND 8 PUMPS WITH DIFFERENTIAL CIRCUITS



### PUMP WITHOUT COOLER:

WHEN NO COOLER IS ORDERED OR SPECIFIED, PORTS B AND 22 ARE CONNECTED. PORT B IS PLUGGED. PORTS 12 AND 25 ARE OPEN.

### PUMP WITH COOLER:

WHEN COOLER IS ORDERED OR SPECIFIED, PORTS 22 AND 26 ARE CONNECTED TO COOLER. PORTS 12 AND 25 ARE OPEN.

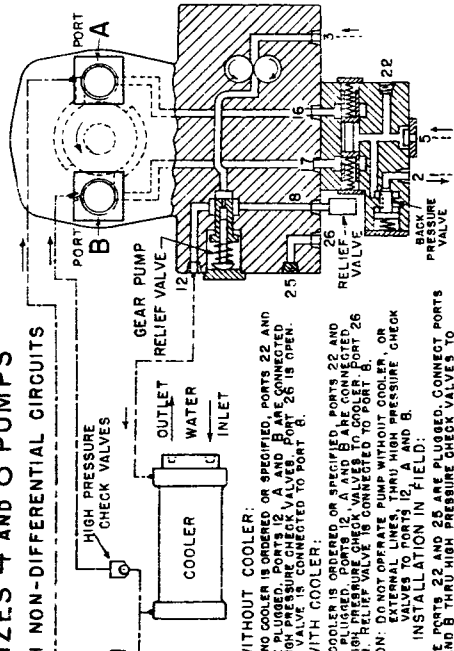
### CAUTION:

DO NOT OPERATE PUMP WITHOUT COOLER OR EXTERNAL LINE CONNECTING PORTS 12 AND 25.

### \* COOLER INSTALLATION IN FIELD:

BE SURE TUBE CONNECTING PORTS B AND 22 IS REMOVED. PLUG PORT B. CONNECT PORTS 22 AND 26. CONNECT PORTS 12 AND 25 TO COOLER.

## SIZES 4 AND 8 PUMPS WITH NON-DIFFERENTIAL CIRCUITS



### PUMP WITHOUT COOLER:

WHEN NO COOLER IS ORDERED OR SPECIFIED, PORTS 22 AND 25 ARE PLUGGED. PORTS 12, A AND B ARE CONNECTED THROUGH HIGH PRESSURE CHECK VALVES TO COOLER. RELIEF VALVE IS CONNECTED TO PORT B.

### PUMP WITH COOLER:

WHEN COOLER IS ORDERED OR SPECIFIED, PORTS 22, 25, 26 AND 50 ARE PLUGGED. PORTS 12, A AND B ARE CONNECTED THROUGH HIGH PRESSURE CHECK VALVES TO COOLER. RELIEF VALVE IS CONNECTED TO PORT B.

CAUTION: DO NOT OPERATE PUMP WITHOUT COOLER, OR LINES, THRU HIGH PRESSURE CHECK VALVES TO PORTS 12, A AND B.

### \* COOLER INSTALLATION IN FIELD:

BE SURE PORTS 22 AND 25 ARE PLUGGED. CONNECT PORTS 12, A AND B THRU HIGH PRESSURE CHECK VALVES TO COOLER. CONNECT RELIEF VALVE TO PORT B.

### NOTE:

OIL CIRCUIT SHOWS PUMP AS VIEWED FROM FLANGE END. CORED OR DRILLED PASSAGES ARE SHOWN THUS: OPEN PORTS ARE SHOWN THUS: PLUGGED PORTS ARE SHOWN THUS:

\* OILGEAR RECOMMENDS GALVANIZED FITTINGS AND PIPE BE USED TO CARRY WATER TO AND FROM COOLERS.

57706 A  
COOLER OIL CIRCUITS  
TWO-WAY TYPE "D" PUMPS  
DR. G.M. CH. G.M.  
APR. 2, 1962

REISSUED, FEB. 1962

THE OILGEAR COMPANY  
MILWAUKEE 4, WISCONSIN, U.S.A.

DS-947906 A