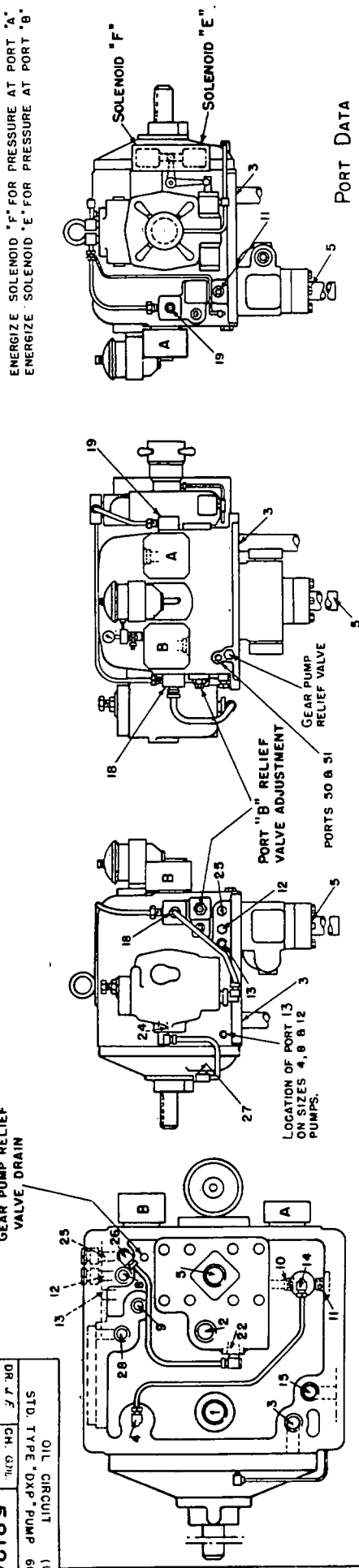
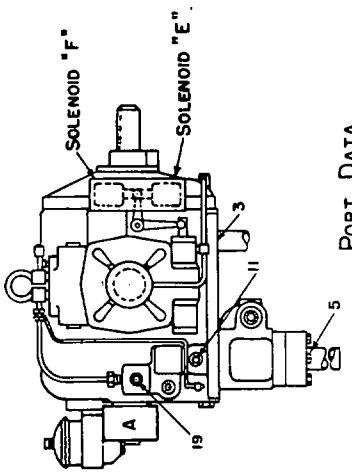


**B-0218**  
 OIL CIRCUIT  
 STD. TYPE PUMP  
 (60 H.P.)  
 DR. CH. APP. 2.0

GEAR PUMP RELIEF VALVE DRAIN



ENERGIZE SOLENOID "F" FOR PRESSURE AT PORT "A"  
 ENERGIZE SOLENOID "E" FOR PRESSURE AT PORT "B"

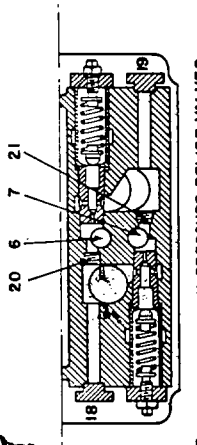
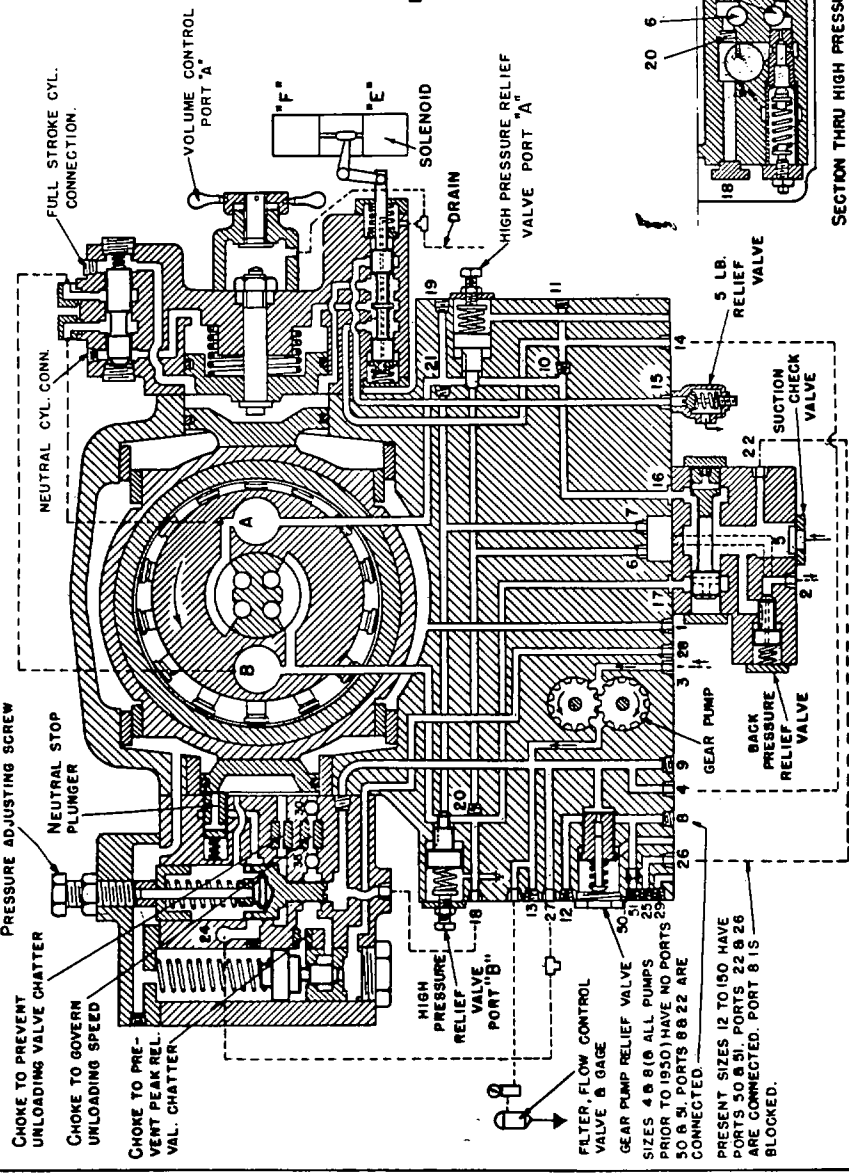


**PORT DATA**

PORT NO.	PUMP DESCRIPTION	PIPE TAP SIZE	8	12	20	35	60	100	150
A	RETURN CONNECTION	1 1/4	1 1/4	2	2 1/2	2 1/2	2 1/2	2 1/2	2 1/2
B	HIGH PRESSURE CONNECT.	1 1/4	1 1/4	2	2 1/2	2 1/2	2 1/2	2 1/2	2 1/2
1	CASE DRAIN	1/2	1/2	1/2	1/2	1/2	1/2	1/2	1/2
2	EXCESS RETURN EXHAUST	1/2	1/2	1/2	1/2	1/2	1/2	1/2	1/2
3	GEAR PUMP SUCTION	1	1	1 1/4	1 1/4	1 1/4	1 1/4	1 1/4	1 1/4
4	GEAR PUMP PRESSURE	1/2	1/2	1/2	1/2	1/2	1/2	1/2	1/2
5	PUMP SUCTION	1 1/4	1 1/4	2	2 1/2	2 1/2	2 1/2	2 1/2	2 1/2
6	'A' REL. VALVE EXHAUST	1/4	1/4	1/4	1/4	1/4	1/4	1/4	1/4
7	'B' REL. VALVE EXHAUST	1/4	1/4	1/4	1/4	1/4	1/4	1/4	1/4
8	G.P. REL. VALVE EXHAUST	1/2	1/2	1/2	1/2	1/2	1/2	1/2	1/2
9	GEAR PUMP PRESSURE	1/2	1/2	1/2	1/2	1/2	1/2	1/2	1/2
10	'A' CORE TO CONTROL CONN.	1/4	1/4	1/4	1/4	1/4	1/4	1/4	1/4
11	'A' SIDE CONTROL CONN.	1/2	1/2	1/2	1/2	1/2	1/2	1/2	1/2
12	G.P. REL. VALVE EXHAUST	1/2	1/2	1/2	1/2	1/2	1/2	1/2	1/2
13	GEAR PUMP PRESSURE	1/2	1/2	1/2	1/2	1/2	1/2	1/2	1/2
14	'A' SIDE CONTROL CONN.	1/4	1/4	1/4	1/4	1/4	1/4	1/4	1/4
15	'A' SIDE CONTROL EXH.	1/2	1/2	1/2	1/2	1/2	1/2	1/2	1/2
16	'A' CORE SIZE	1/8	1/8	1/8	1/8	1/8	1/8	1/8	1/8
17	'B' CORE SIZE	1/8	1/8	1/8	1/8	1/8	1/8	1/8	1/8
18	'B' CORE CONNECTION	3/8	3/8	3/8	3/8	3/8	3/8	3/8	3/8
19	'A' CORE CONNECTION	3/8	3/8	3/8	3/8	3/8	3/8	3/8	3/8
20	'A' REL. VALVE CROSS CONN.	1/4	1/4	1/4	1/4	1/4	1/4	1/4	1/4
21	'B' REL. VALVE CROSS CONN.	1/4	1/4	1/4	1/4	1/4	1/4	1/4	1/4
22	STANDARD SUPERCHARGE	3/8	3/8	3/8	3/8	3/8	3/8	3/8	3/8
24	GEAR PUMP CONNECT.	1/4	1/4	1/4	1/4	1/4	1/4	1/4	1/4
25	AUXILIARY CONNECT.	1/2	1/2	1/2	1/2	1/2	1/2	1/2	1/2
26	AUXILIARY CONNECT.	1/2	1/2	1/2	1/2	1/2	1/2	1/2	1/2
27	GEAR PUMP PRESSURE	1/2	1/2	1/2	1/2	1/2	1/2	1/2	1/2
28	'B' SIDE CONTROL EXH.	1/2	1/2	1/2	1/2	1/2	1/2	1/2	1/2
29	OIL FILTER DRAIN	1/4	1/4	1/4	1/4	1/4	1/4	1/4	1/4
30	GAGE CONNECTION	1/4	1/4	1/4	1/4	1/4	1/4	1/4	1/4
35	PRESSURE CONNECTION	3/8	3/8	3/8	3/8	3/8	3/8	3/8	3/8
50	G.P. V. EXHAUST	1/2	1/2	1/2	1/2	1/2	1/2	1/2	1/2
51	ACCESS PORT TO PORT 50	1/2	1/2	1/2	1/2	1/2	1/2	1/2	1/2

INSTALLATION DRAWING-DS-47805  
 COOLER INSTALLATION DRAWING  
 DS-47905  
 COOLER OIL CIRCUIT DS-947905  
 COOLERS ARE NOT FURNISHED WITH PUMPS.

NOTE:  
 PUMP SHOWN AT FULL STROKE.  
 OIL CIRCUIT SHOWS THE PUMP  
 LOOKING FROM FLANGE END.  
 EXTERNAL PIPE LINES: ---  
 CORED OR DRILLED PASSAGES: ---  
 OPEN PORTS: ---  
 PLUGGED PORTS: ---



SECTION THRU HIGH PRESSURE RELIEF VALVES

CHOKES TO PREVENT UNLOADING VALVE CHATTER  
 CHOKES TO GOVERN UNLOADING SPEED  
 CHOKES TO PREVENT PEAK RELIEF VAL. CHATTER  
 PRESSURE ADJUSTING SCREW  
 NEUTRAL STOP PLUNGER  
 NEUTRAL CYL. CONN.  
 FULL STROKE CYL. CONNECTION  
 VOLUME CONTROL PORT "A"  
 SOLENOID  
 DRAIN  
 HIGH PRESSURE RELIEF VALVE PORT "A"  
 GEAR PUMP  
 BACK PRESSURE RELIEF VALVE  
 SUCTION CHECK VALVE  
 5 LB. RELIEF VALVE  
 FILTER FLOW CONTROL VALVE & GAGE  
 GEAR PUMP RELIEF VALVE  
 SIZES 4, 8 & 10 ALL PUMPS PRIOR TO 1950 HAVE NO PORTS 25 & 26  
 50, 8 & 9, PORTS 8 & 22 ARE CONNECTED.  
 PRESENT SIZES 12 TO 150 HAVE PORTS 50 & 51. PORTS 22 & 26 ARE CONNECTED. PORT 8 IS BLOCKED.