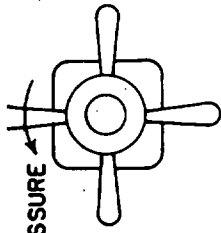


# TYPE "DP" PUMP WITH REMOTE PRESSURE CONTROL VALVE

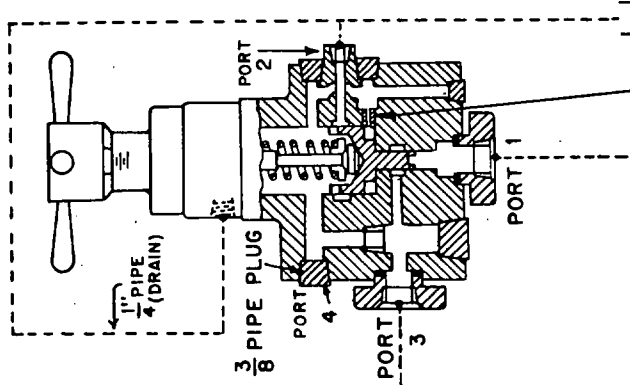


47275



DECREASE PRESSURE ←

ADJUST THIS REMOTE PRESSURE CONTROL VALVE FOR VARYING PRESSURE



CHOKE TO PREVENT RELIEF VALVE CHATTER

ORIFICE (ONLY IF NECESSARY TO RAISE OPERATING PRESSURE FOR PRESSURE SWITCH.)

PRESSURE SWITCH CONNECTION

3/4" PIPE

VOLUME ADJUSTING SCREW

PORT 134

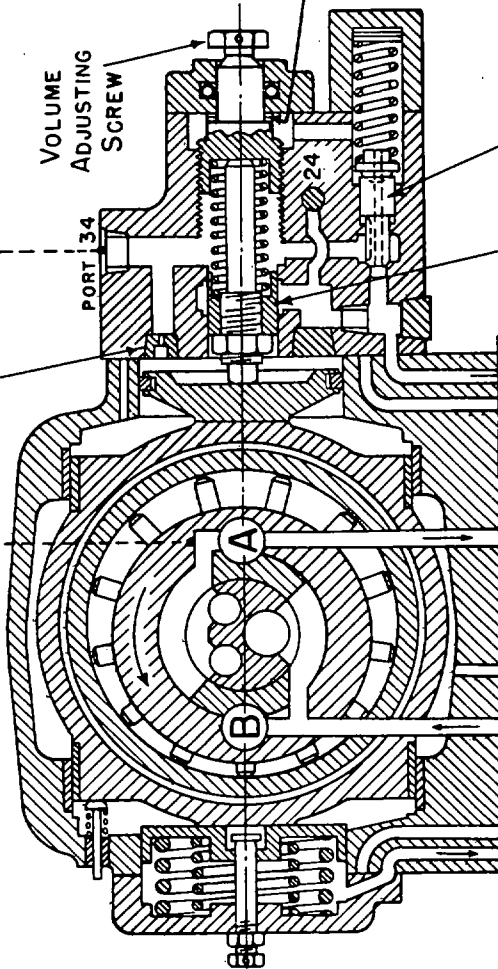
3/4" PIPE

FULL STROKE STOP

HIGH PRESSURE LINE FROM PUMP

NEUTRAL STOP PLUNGER

CONTROL RELIEF VALVE



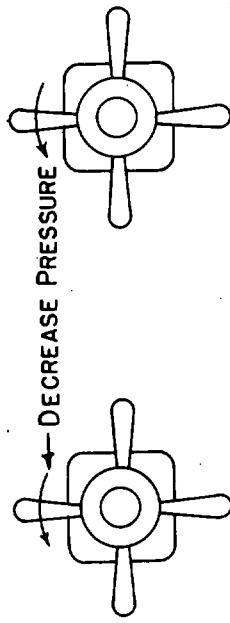
SEE "DP" PUMP OIL CIRCUIT DS-947520-A FOR ADDITIONAL INFORMATION.

REFERENCES:

- PUMP INSTALLATION DWG. DS-47501
- PUMP PARTS DWG. DS-947501
- REMOTE PRESS. CONTROL VALVE INST. DWG. DS-47502
- REMOTE PRESS. CONTROL VALVE PARTS DWG. DS-947502

OIL CIRCUIT  
TYPE "DP" PUMP WITH REMOTE  
PRESSURE CONTROL VALVE

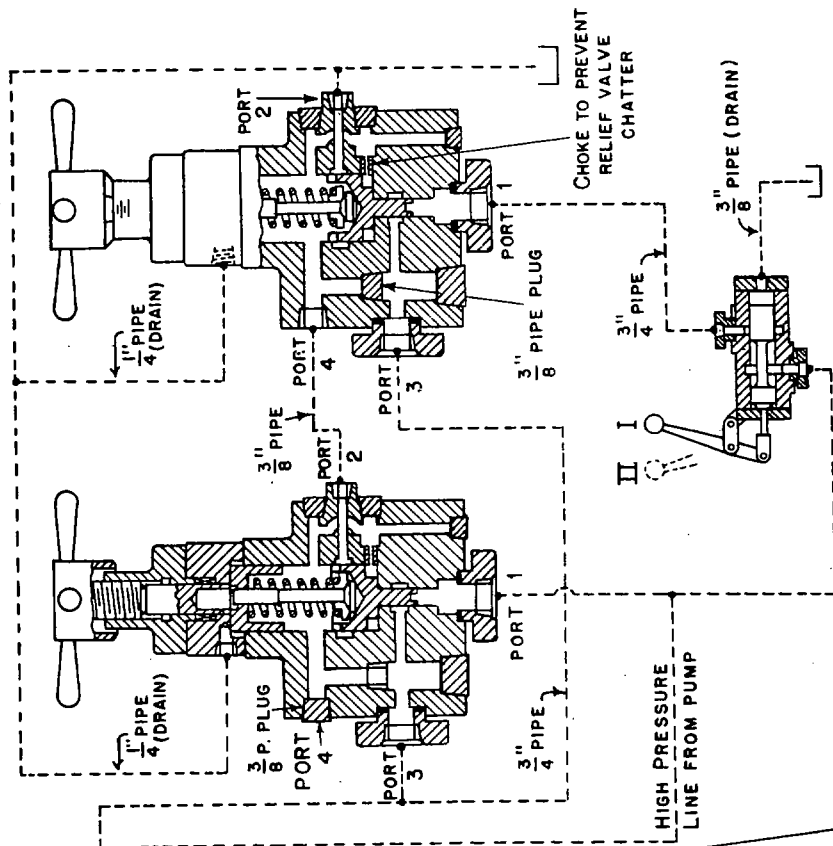
# TYPE "DP" PUMP WITH DUAL REMOTE PRESSURE CONTROL VALVES



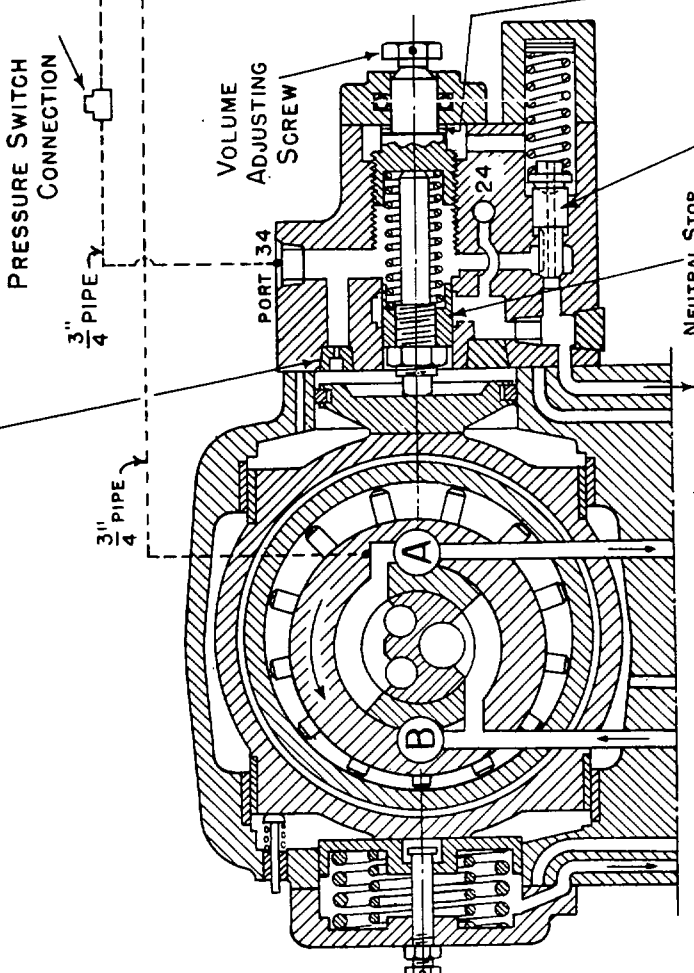
ORIFICE (ONLY IF NECESSARY TO RAISE OPERATING PRESSURE FOR PRESSURE SWITCH.)

ADJUST THIS REMOTE PRESSURE CONTROL VALVE FOR PRESSURES FROM 200 TO 1000 PSI.

ADJUST THIS REMOTE PRESSURE CONTROL VALVE FOR PRESSURES FROM 1000 TO 2500 PSI.



3" TWO-WAY VALVE  
 POSITION I FOR PRESSURES FROM 1000 TO 2500 PSI.  
 POSITION II FOR PRESSURES FROM 200 TO 1000 PSI.



SEE "DP" PUMP OIL CIRCUIT DS-947520-A FOR ADDITIONAL INFORMATION.

- REFERENCES:
- PUMP INSTALLATION DWG. DS-47501
  - PUMP PARTS DWG. DS-947501
  - REMOTE PRESS. CONTROL VALVE INST. DWG. DS-47502
  - REMOTE PRESS. CONTROL VALVE PARTS DWG. DS-947502