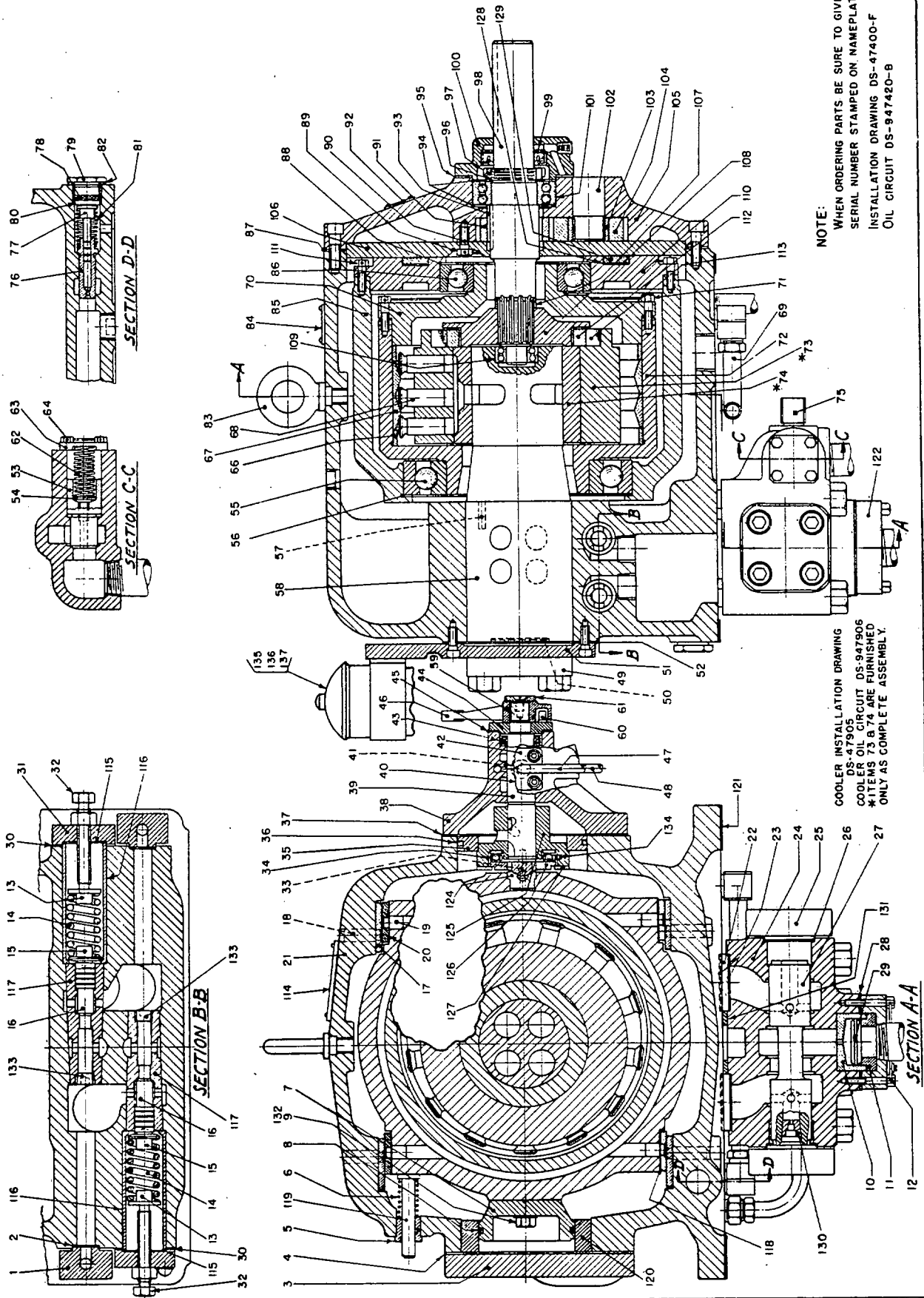


OILGEAR TYPE "DH" PUMPS



51721-F



NOTE:
WHEN ORDERING PARTS BE SURE TO GIVE
SERIAL NUMBER STAMPED ON NAMEPLATE.
INSTALLATION DRAWING DS-47400-F
OIL CIRCUIT DS-947420-B

COOLER INSTALLATION DRAWING
DS-47905
COOLER OIL CIRCUIT DS-947905
*ITEMS 73 & 74 ARE FURNISHED
ONLY AS COMPLETE ASSEMBLY.

REPAIR PARTS DRAWING
OILGEAR TYPE "DH" PUMPS
DS-947400-F
51721-F

REISSUED JAN. 8, 1951

THE OILGEAR CO.
MILWAUKEE 4, WISCONSIN, U.S.A.

DS-947400-1

PARTS LIST
OILGEAR "DH" PUMPS

NO.	PARTS	NO.	PARTS	NO.	PARTS
1.	Flange, Auxiliary	47.	Tube, Control L.H.	93.	Key, G.P. Drive
2.	Gasket, Flange	48.	Tube, Control R.H.	94.	Shim, Front Shaft Bearing
3.	Head, Control Cylinder	49.	Flange, Pipe	95.	Gasket, Seal Housing
4.	Gasket, Head	50.	Gasket, Flange	96.	Washer, Lock
5.	Bushing, Indicator	51.	Cover, Pintle End	97.	Nut, Lock
6.	Spring, Indicator	52.	Gasket, Cover	98.	Shaft, Drive
7.	Piston, Small Control	53.	Plunger, B.P.R.V.	99.	Seal, Shaft
8.	Ring, Small Piston	54.	Washer, Shim	100.	Housing, Shaft Seal
9.	Screw, Cap. Hex. Hd.	55.	Bearing, Rear Rotor	101.	Bearing, Front Shaft
10.	Cage, Check Valve	56.	Shim, Rear Rotor Bearing	102.	Shaft, Gear Pump Stub
11.	Seat, Check Valve	57.	Key, Pintle	103.	Bearing, Gear Pump Roller
12.	Screw, Cap. Hex. Hd.	58.	Pintle	104.	Gear, G.P. Driven
13.	Seat, H.P.R.V. Spring	59.	Key, Woodruff	105.	Housing, Gear Pump
14.	Spring, H.P.R.V.	60.	Pin, Stop	106.	Cover, Gear Pump
15.	Seat, H.P.R.V. Spring	61.	Washer, Retainer	107.	Spacer, Coupling
16.	Plunger, H.P.R.V.	62.	Spring, B.P.R.V.	108.	Flange, Coupling
17.	Liner, Case	63.	Cap, B.P.R.V.	109.	Bearing, Rear Shaft
18.	Dowel, Case Liner	64.	Screw, B.P.R.V. Cap	110.	Cover, Slide Block
19.	Dowel, Slide Block Liner	65.		111.	Screw, Slide Block Cover
20.	Liner, Slide Block	66.	Ring, Spacer	112.	Ring, Coupling
21.	Case, Pump	67.	Ring, Thrust	113.	Roller, Coupling
22.	Spacer, Suction Valve	68.	Piston, Pump	114.	Plate, Instruction
23.	Gasket, Spacer	69.	Tubing, Gear Pump	115.	Shim, H.P.R.V. Retainer
24.	Body, Suction Valve	70.	Cover, Rotor	116.	Retainer, Bushing
25.	Flange, Suction Valve	71.	Screw, Rotor Cover	117.	Bushing, H.P.R.V.
26.	Gasket, Flange	72.	Rotor	118.	Shim, Liner
27.	Plunger, Suction Valve	73.	Cylinder, Pump*	119.	Stem, Indicator
28.	Gasket, Flange	74.	Bushing, Cylinder*	120.	Adapter, Control
29.	Disc, Check Valve	75.	Tubing, Supercharge	121.	Gasket, Pump Mounting
30.	Gasket, H.P.R.V. Cap	76.	Bushing, G.P.R.V.	122.	Flange, Suction
31.	Cap, H.P.R.V.	77.	Plunger, G.P.R.V. Dashpot	123.	
32.	Screw, H.P.R.V. Adjusting	78.	Shim, G.P.R.V.	124.	Cup, Thrust
33.	Pin, Guide	79.	Cap, G.P.R.V.	125.	Sleeve, Control
34.	Bearing, Thrust	80.	Spacer, G.P.R.V.	126.	Plate, Thrust
35.	Piston, Large Control	81.	Spring, G.P.R.V.	127.	Ring, Retainer
36.	Ring, Large Piston	82.	Gasket, G.P.R.V. Cap	128.	Shim, Slide Block Spacer
37.	Gasket, Control Housing	83.	Eyebolt	129.	Ring, Slide Block Spacer
38.	Housing Control	84.	Nameplate	130.	Plug, Choke
39.	Plunger, Control	85.	Slide Block	131.	Gasket, Suction Valve
40.	Flange, Angle	86.	Bearing, Front Rotor	132.	Gasket, Piston Screw
41.	Gasket, Flange	87.	Gasket, Gear Pump Housing	133.	Plug, H.P.R.V. Cross Conn.
42.	Flange, Straight	88.	Shim, Front Rotor Bearing	134.	Spring, Thrust Bearing
43.	Seal, Plunger Oil	89.	Gasket, G.P. Cover Screw	135.	Filter, Oil
44.	Gland, Oil Seal	90.	Screw, G.P. Cover	136.	Valve, Flow Control
45.	Shim, Gland	91.	Gear, G.P. Driver	137.	Gage, Change Indicator
46.	Lever, Control	92.	Plate, Rotation Direction		

*Parts 73 and 74 furnished only as a complete assembly

NOTE: When ordering parts be sure to give serial number of pump.